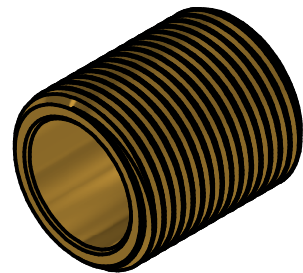
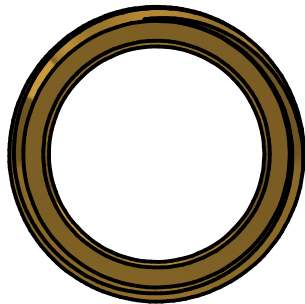
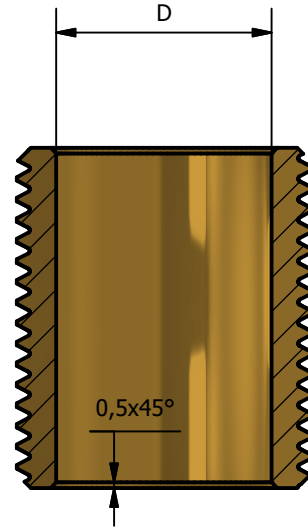
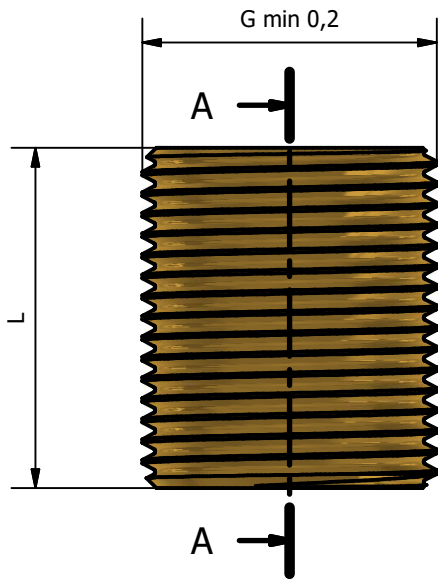


A-A (1.5 : 1)



TDM code	G	L	D
105MT 1230	1/2	30	15
105MT 3430	3/4	30	19
105MT 0133	1"	33	25
105MT P435	1"1/4	35	33
105MT P240	1"1/2	40	40
105MT 0250	2"	50	50

WORKING PRESSURE MAX from 1/2 to 1"1/4	16 BAR
WORKING PRESSURE MAX from 1"1/2 to 2"	10 BAR
WORKING TEMPERATURE MAX	120°C

CONFORMITY	
1) DM 174 del 6 Aprile 2004	
2) UNI EN ISO 228	
3) UNI EN 1254-4	

00	Prima emissione	Delaini M.	09/05/2008
Rev.	Nota Revisione	Approvatore	Data Approvazione
Toll Gen:	JS14	Stato sup.:	Giallo Tornito
Filetto:	ISO 228	Note tecniche:	
Peso lavorato:	Peso grezzo:	N° stampo:	
Materiale:		Disegnatore:	Data: 09/05/2008
CW 617N EN12168		Delaini P.	
TDM Brass s.r.l via Artigiani , 7-9 25030 Maclodio BS Italy tel +39 030 9972217 fax 030 9787089 www.tdmbrass.it email info@tdmbrass.it			

Codice: 105MT scheda

Descrizione: Brass screw

TDM BRASS
ITALIAN FITTINGS